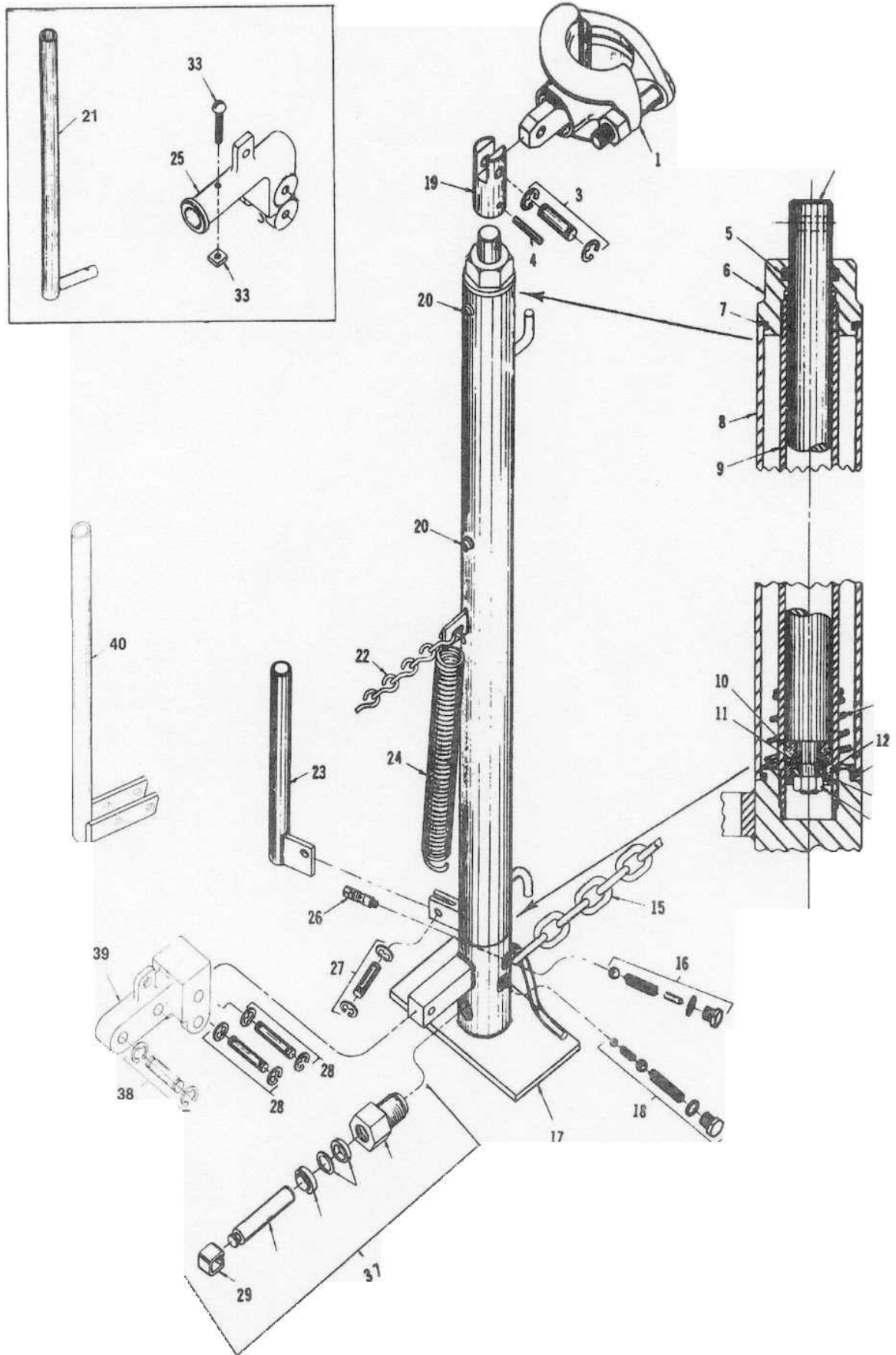


STAR PARKING METER POST STRAIGHTENER MODEL—QH525



STAR PARKING METER POST STRAIGHTENER MODEL-QH525

PARTS LIST

Item No.	Part No.	Part Name
1-A	QH525-8-1	Ram Saddle (For 2" Post) & Clevis
1-B	QH525-8-2	Ram Saddle (For 2½" Post) & Clevis
2	QH525-6	Ram (Hard Chrome Plated)
3	CP13-10RP	Ram Yoke Pin (Incl. Rings)
4	QH525-14	Ram Yoke Drive Pin
5 (K)	HF500-4	Top Nut "O" Ring
6	QH525-4	Top Nut
7 (K)	HF500-32	Body "O" Ring (Order 2)
8	QH525-2	Reservoir Tube Assy.
9	HF500-5	Inside Cylinder Tube
10	HF500-8	Ram Cup Support Washer
11 (K)	HF500-8A	Ram Cup "O" Ring
12 (K)	HF500-7	Ram Cup
13	HF500-9	Ram Cup Washer
14	QH525-13	Ram Cup Nut
15	QH525-1J	Chain (Complete)
(*) 16 (K)	HF500-50RP	Release Valve (Complete)
(*) 17	QH525-1RP	Body Assem. (Incl. all internal parts (*) Designation) ..
(*) 18 (K)	HF500-51RP	Pump Valve (Complete)
19	QH525-7	Ram Yoke
20	HF500-30	Filler Screw & Washer (Order 2)
21	Obsolete	Piston Lever Handle See #25 (Was QH525-9)
22	QH525-3	Handle Chain
23	QH525-10	Release Lever
24	HF500-22	Piston Lever Return Spring
25	Obsolete	Socket Order New Style QH525-43 plus 42, 40, 44 (Was QH 525-20)
(*) 26 (K)	QH525-15RP	Release Plunger (Incl. Packing)
27 (K)	HF500-24RP	Release Lever Pin (Incl. Rings)
28 (K)	HF500-25RP	(2) Lever Socket Pin (Incl. rings)
(*) 29 (K)	HF500-29 (+)	Pump Piston Clip
33	Obsolete	Piston Lever Handle Bolt & Nut (Was QH525-12)
36	QH525-53RP	Hydraulic Repair Kit with (K) Designation
(*) 37 (K)	HF500-54RP	Pump Piston Assembly with (+) Designation (Ready to Install)
38	QH525-42RP	Pump Lever Pin (Incl. Ring) New Style (Order 2)
39	QH525-43	Socket New Style
40	QH525-44	Pump Lever New Style

IMPORTANT — Please Give Following Information When Ordering Parts

a) Part Number b) Part Name

STAR HYDRAULICS, LLC 2727 CLINTON STREET **RIVER GROVE, IL 60171**
 PHONE AREA CODE 708-453-3238